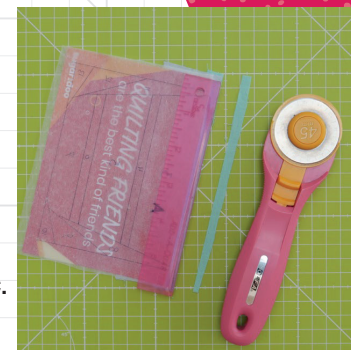


# FPP CHEAT SHEET

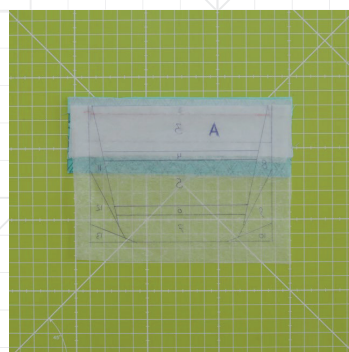


1 Fold the pattern over the line you're about to sew.

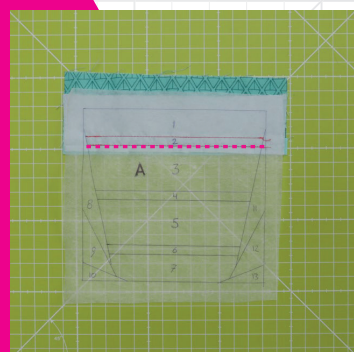
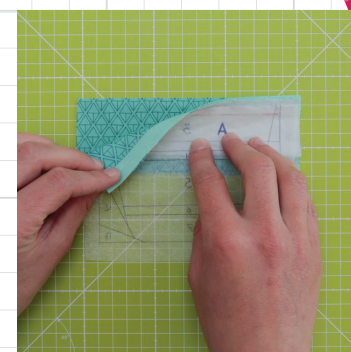


2 Place the add-a-quarter ruler along the edge and cut away any excess fabric.

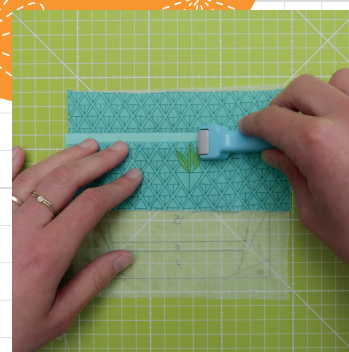
3 Place the new fabric piece, right side up, underneath the folded back pattern piece.



4 The fabric piece should be aligned with the 1/4" cutting line.



5 Fold back the pattern and sew over the line.



6 Turn your work upside down and fold open the fabric piece. Use an iron, seam roller or your fingers to press this seam open.

**sugardoo**  
Quilt patterns + Fabric